

# Shelter

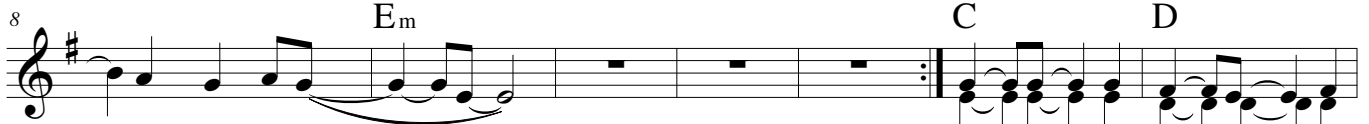
Written by: KRISTER LILLAS  
Performed by: PRAISELAND

MM=132

Em



You're the Rock on which I stand, my Founda - da -  
You're my Fort - ress, You're my Shield, when You touch  
You're my Re - fuge in the night, in the dark -  
You're my Strength, my so - lid ground, I am safe



- tion in the sand  
- I will be healed  
- ness You're my Light  
- when You're a - round



Foes may as - sail me on



eve - ry side, all a - round, I will re - ly on the Lord



Oh - oh, up - on a stor - my sea You prove Your love for me, Your



pre - sence's all I need. Oh - oh, when You are by my side,



my Shel - ter and my Guide, I'll ne - ver have to run nor hide.



38 Em Em/D# Em/D Em/C# C D Em Bm7

I long to dwell in Your tent for - e-ver and take refuge in the shelter of Your wings. I

38

I long to dwell, I long to dwell, to dwell in the shel - ter of Your wings. I

38

For-e-ver I will dwell in shel - ter under Your wings.

47 Em Gm Gm/F# Gm/F

Oh - oh, Oh - oh, up - on a stor - my sea

47

52 Gm/E Eb D

You prove Your love for me, Your pre - sence's all I

52

56 F Gm Gm/F# Gm/F Gm/E

need. Oh - oh, when You are by my side, my

56

61 Eb C D Gm

Shel - ter and my Guide, I'll ne - ver have to run nor hide.

61