

MANUAL Installation TESTS 2018



CONTENTS:

General information:.....	2
Installation instructions for stand-alone computer.....	2
Network Installation only.....	6
Client installation part 1	6
Part 2 Network installation: installing the Copyminder software.....	11
Install CMServer as a Windows service	15
Client installation Part 2.....	16

General Information:

The Installation of the **stand-alone tests** is so simple **when you install as a DEMO with an active Internet connection**, that you really do not need this manual.

However, for the network installation reading the manual from page 6 and on is advised!

In this manual instructions are given to install tests of Pyramid Productions with the TOSSA used as an example. There are two separate parts: either a **stand-alone** or a **network** installation.

Below you will find the installation instructions for a **stand-alone** computer.

The Copyminder software checks the licenses and the number of installed clients (maximum of 2 users on 1 network during 1 year). These checks require an active internet connection. However, the computer can be without an active Internet connection temporarily (max 2 weeks) before the Security check gives an alarm.

Installation instructions for stand-alone computer

1. Run the setup file, e.g. : setupTOSSA.exe.
2. The installed test will start automatically. If not, then click the TEST.EXE file.

The Product registration screen (Figure 1) shows:



Figure 1: Product Registration Screen

Installation Manual for Tests of Pyramid Productions 2018

3. Move forward when your computer has DIRECT internet access. If not, go to step 5.
4. Choose 'activate as demo or trial' (see Figure 2). The advantage is that you can start using the test immediately for a period of 30 days, for free. Whenever you have paid for the test the license will be set to 1 year. You don't have to do anything.



Figure 2: activate as trial or demo

5. Choose for 'activate as a stand-alone programme' (see Figure 3). For this you need to ask for a Product Key with Pyramid Productions via email: help@pyramidproductions.nl.



Figure 3: activate as a stand-alone programme

6. When you enter the Product Key received from Pyramid Productions, a screen shows up in which the computer tries to connect to the Internet (see Figure 4).



Figure 4: Computer tries to connect to the Internet

7. Because there is no Internet connection another screen shows up with further instructions. (see Figure 5). Click on Manual Installation in order to show Figure 6. Please write down the information in Figure 6!



Figure 5. Internet connection not possible. Please activate manually.

8. Using another computer on which there is a direct Internet connection, you can go to the website <http://primary.copyminder.com/activate> (see Figure 6).



Figure 6: Go to <http://primary.copyminder.com/activate.php> and receive there the activation code you can enter here.

9. Enter the activation code in the screen in Figure 6. Then the test will work immediately. (NB: some delay may be noticed in the test start up due to this security).

Any further questions? Use: inform@pyramidproductions.nl
Good luck!

N.B.: instructions below ONLY for NETWORK installation!

In this manual the installation of any test of Pyramid Productions will be explained on a client and a server (SMRC003). The operating system of the server is Microsoft Server 2003 and that of the client is Windows XP. (This is not obligatory, it is just an example).

The installation process runs in 3 steps: first the Client installation part 1, then the CopyMinder software installation and finally part 2 of the installation on the Client.

Client installation part 1

1. Log in on the client and start “setupTossa-N_English301.exe” (the extension –N represents the Network version)

The following screen shows up:



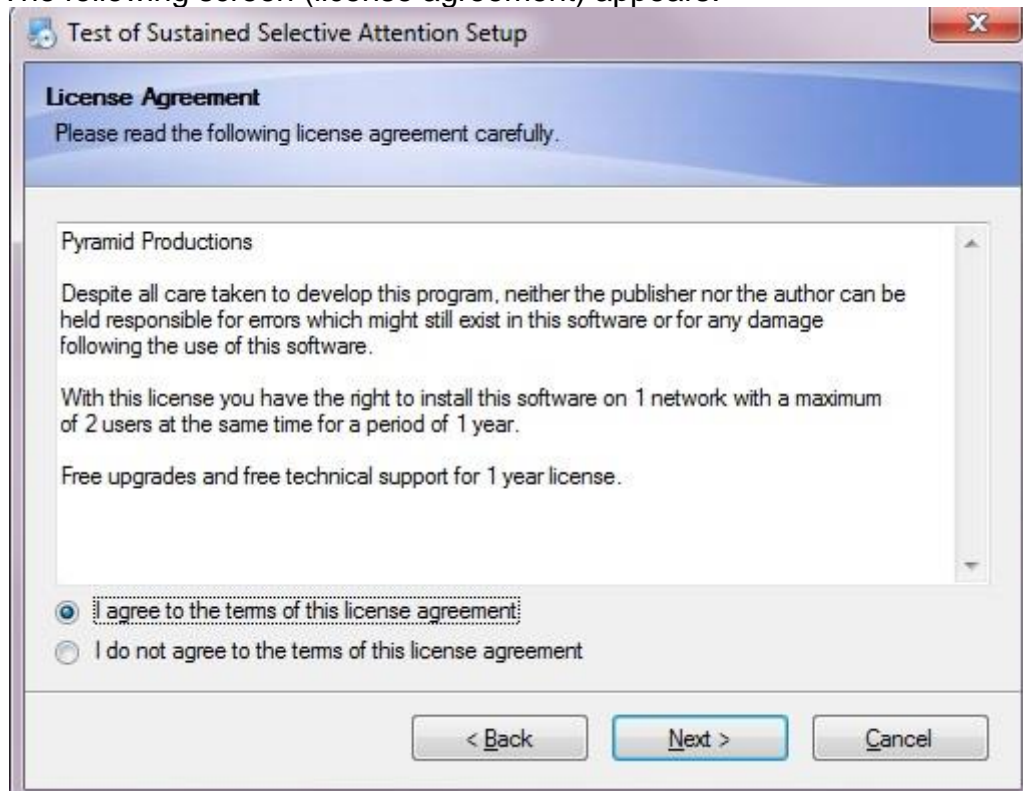
2. Click on “Run” to execute the software.

The next screen will be seen (welcome screen):



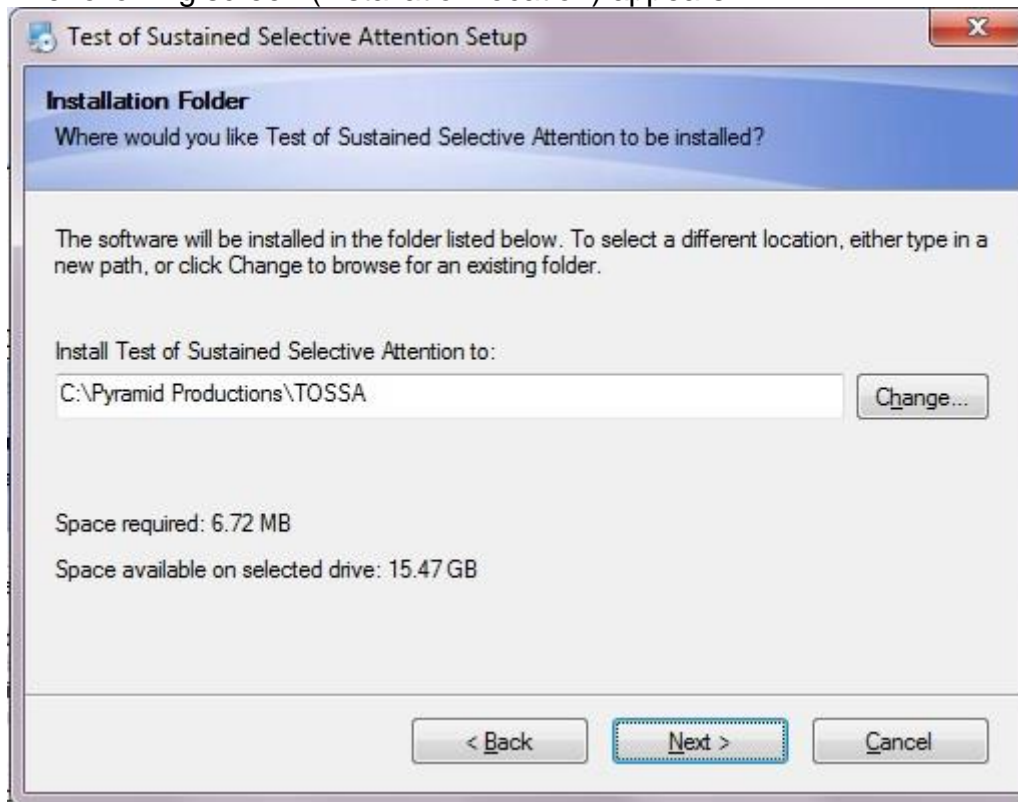
3. Read the text, close other applications and click on "Next"

The following screen (license agreement) appears:



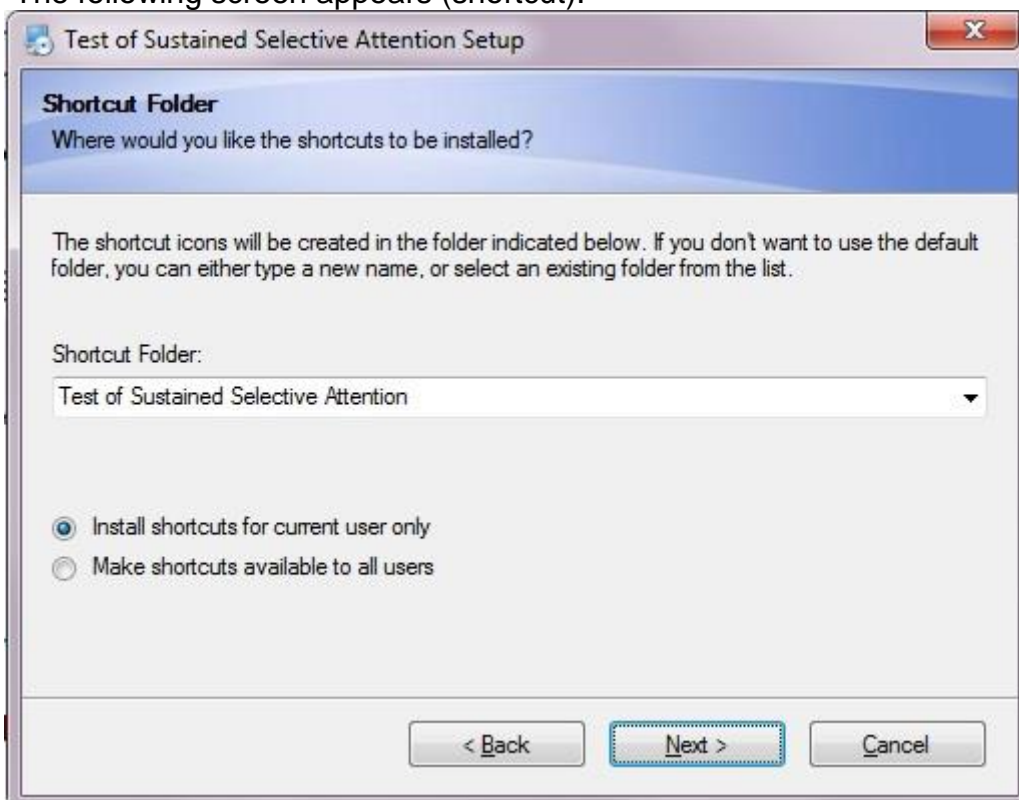
4. Accept the agreement and click on “next”

The following screen (installation location) appears:



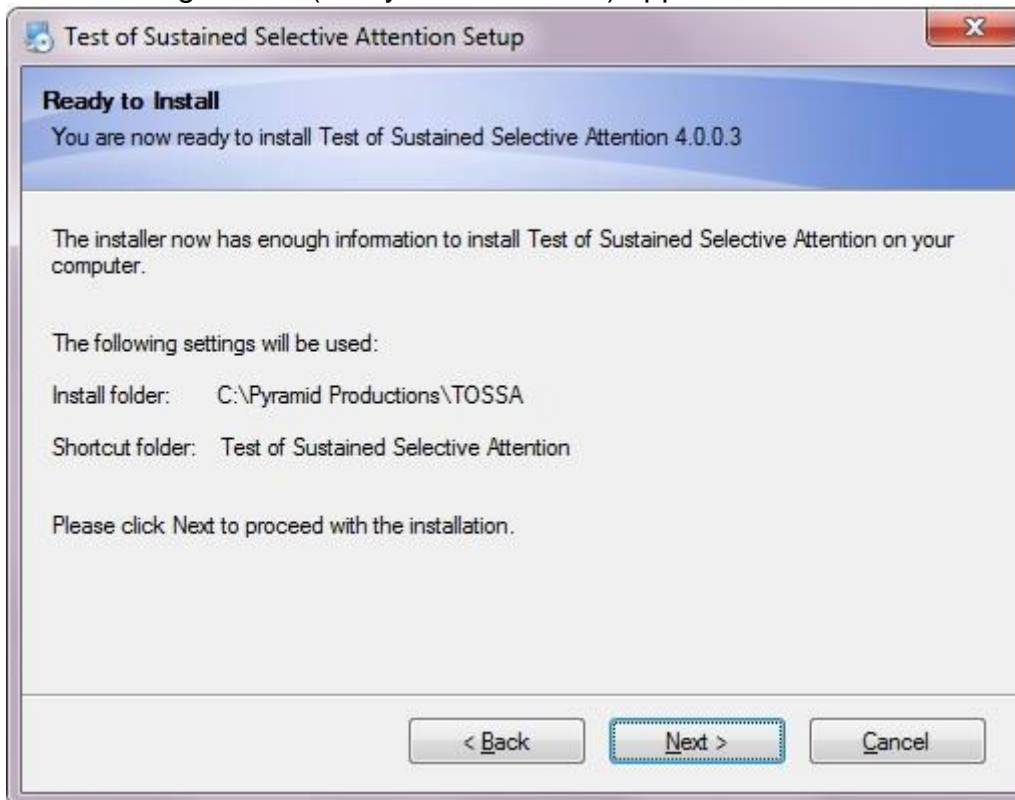
5. Accept the default installation location (C:\Pyramid Productions) or choose a new location on the client. Please do NOT use C:\program files (!)
Click Next to continue

The following screen appears (shortcut):



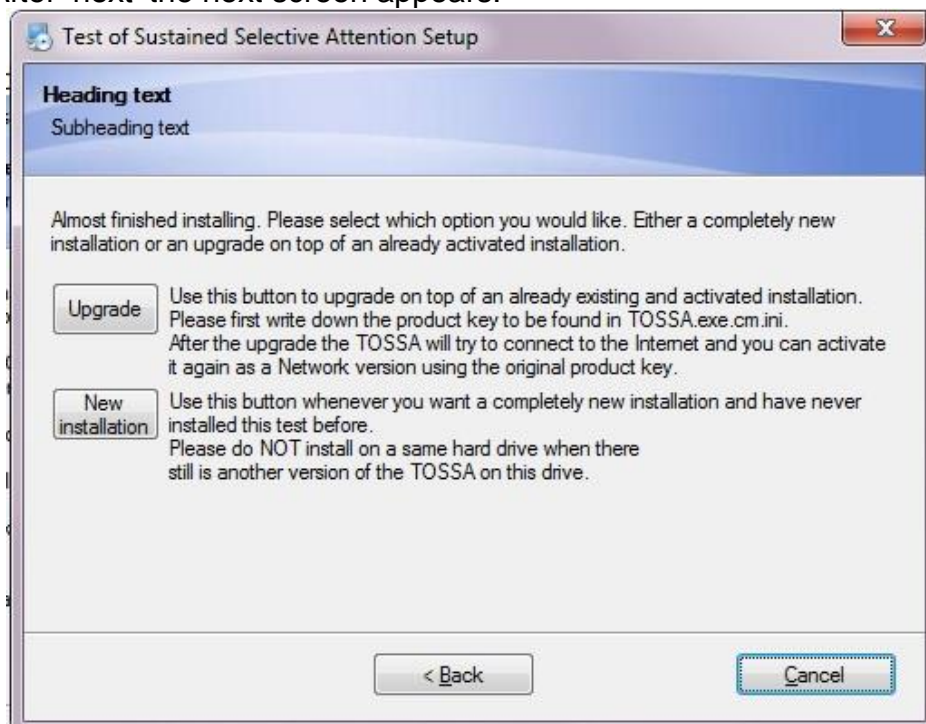
6. Make a choice for the shortcuts and click on “Next”

The following screen (ready for installation) appears:



7. Click on “Next”

After 'next' the next screen appears:



Installation Manual for Tests of Pyramid Productions 2018

8. Choose between an Upgrade over an existing installation or a completely new installation.

Be sure to choose the UPGRADE option whenever you have an earlier version of the TOSSA installed!

If you want a completely new installation (for example, because the older version has some problems or Pyramid Productions told you so) then you will FIRST have to Uninstall the older version of the test completely!

The next screen appears (installation successful):



9. Click on "Close" to finish the installation.

Give the users of the TOSSA at least "Modify" rights on the directory in which the TOSSA is installed. (In this case C:\Program Files\Pyramid Productions\TOSSA)

Part 1 of the installation on the client is now ended.

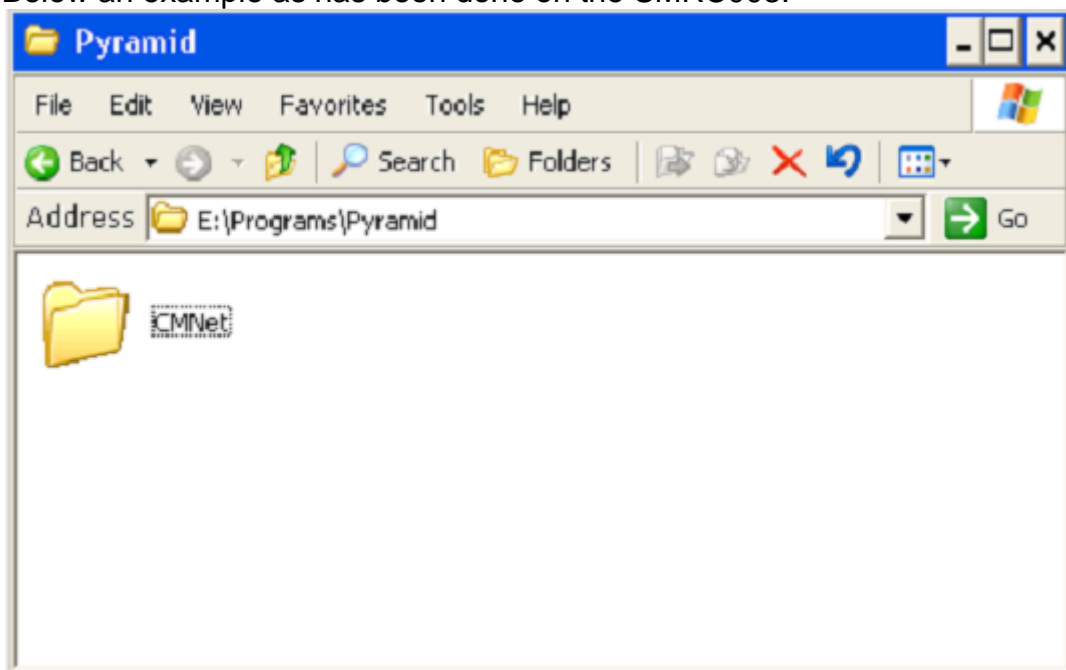
Part 2 NETWORK-installation: Installing the Copyminder software

The CopyMinder (security) software will be installed on a server. This software has to be able from this server to access the Internet (freely) to communicate with the CopyMinder database on a server in England (Microcosm).

The installation will take place on a server because this server is always 'on' and all clients can get access to the Copyminder software..

1. Log in on the server and make a directory with the name "CMNet" or another name (CMServer)

Below an example as has been done on the SMRC003:



2. Give the TOSSA users minimally "Modify" rights on the CMNet directory

The CMNet directory has to be accessed via a UNC-path. Please be sure that the CMNet directory or the directory above is shared.

In this example the directory "Programs" is shared and accessible by the TOSSA users. The share name of Programs is "Programs"

Making rights and a share:

3. Click right on the directory and choose "Properties"

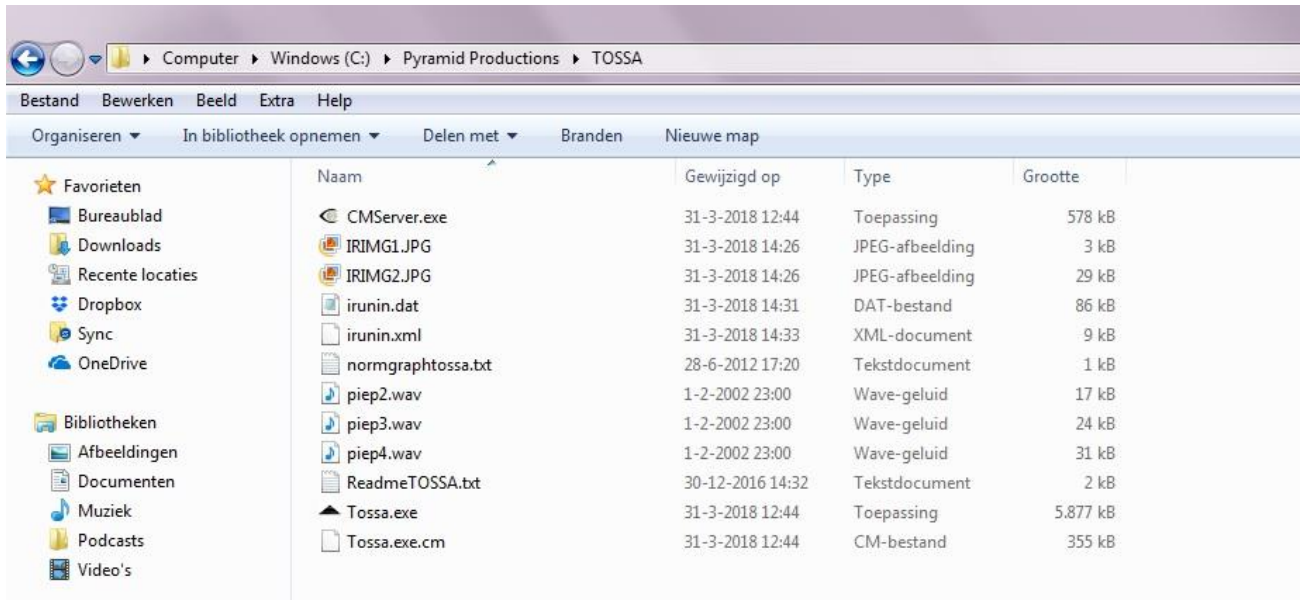
Via Tabs "sharing" and "Security" you can share the directory and give it rights. (do not forget to set the rights on the share directory as well!!)

4. Copy from the just installed client "**CMServer.exe**" to the CMNet directory on the server. (C:\Program Files\Pyramid Productions\TOSSA)

Installation Manual for Tests of Pyramid Productions 2018

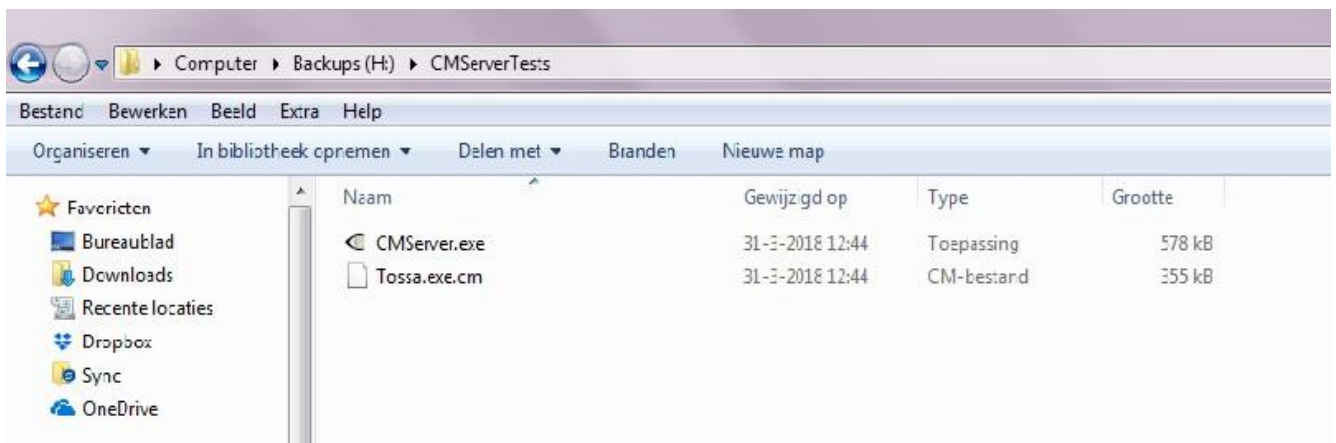
5. Delete CMServer.exe of the cliënt (remove it from the Tossa directory)

The content of the directory on the Client should look like this now:



6. Copy from the just installed client "Tossa.exe.cm" to the CMNet directory on the server.

The CMServer directory should look like this now:



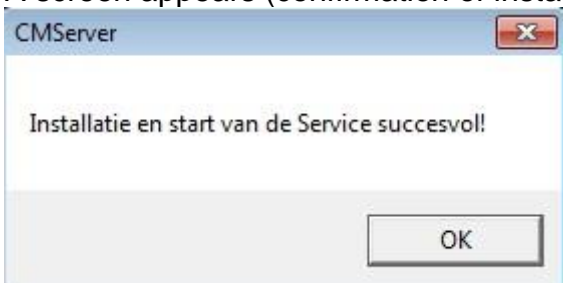
7. Start being logged in on the server "CMServer.exe"

The following screen appears (TOSSA_ENG-N)

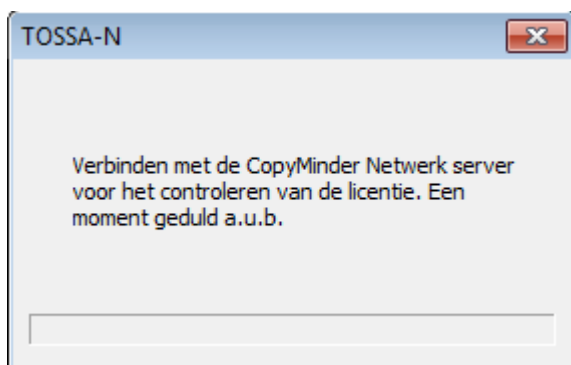


The preference is for the "Windows Service" because only then the CopyMinder Server will always automatically started.

A screen appears (confirmation of installation of the Service):



8. Then run on the client TOSSA.EXE and the next screen appears (TOSSA_ENG-N):



The TOSSA starts normally when the connection with the CopyMinder server has been made (it takes a few seconds).

The following screen appears:



9. Choose for “Install as a Network server”

N.B.: If the option as a “Demo” is chosen then a Product Key will be made automatically. Then it is not required to ask for a Product Key at Pyramid Productions.

The next screen appears (Product registration with Product Key):



10. Fill in the Product Key you have been given by Pyramid Productions and click on “OK”. The connection with the Internet to the Copyminder database is being checked.

11. A product registration screen appears. Please fill in all required fields.

After registration the CopyMinder software will be started automatically.

You can see this via the icon appearing in the right corner of the task bar. Double clicking on this icon opens the Network viewer so you can check active TOSSA sessions.

Running CMServer as a Service

The disadvantage when not having CMServer as a Windows service is that whenever the session is closed and the administrator is logging off, the CMServer software is closed as well. That's the reason to install the CMServer as a Windows server.

Hasn't this happened because the installation was an "Application" installation, then it still can be installed as a Windows service by following the next steps:

12. Close the CMServer first by right-clicking on the Icon of the CMServer Viewer.

13. Next start CMServer again and the option to install as a Windows service will be given again. When everything is OK this will be shown and now the CopyMinder software has been started as a Windows service.

N.B.: The CMServer Viewer icon is now not visible anymore on the task bar. To make it visible you have to run `CMServer.exe /viewer`.

Client installation Part 2

1. Log in on the client on which in the first part the Tossa software has been installed.
2. Start TOSSA_ENG-N.exe

The next screen appears:



3. And activate as a network client

The CopyMinder Network Path will be automatically recognized if the CMServer is running

4. Click on "OK"

The programme will be started now and can be used.

End of the NETWORK installation process
